

# MDPHnet: Real-time Public Health Surveillance

Ounce of Prevention Conference

Tuesday, April 7, 2015

James Buszkiewicz, MPH

Epidemiologist, Office of Statistics and Evaluation

Massachusetts Department of Public Health

# Overview of MDPHnet

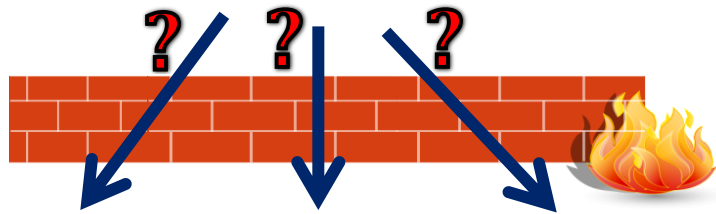
- Ambulatory data
  - Patient visits, pharmacy and labs
- Collaborative effort
  - MDPH, Atrius Health, Massachusetts League of Community Health Centers, Cambridge Health Alliance
- Online query builder tool
  - Complex querying also available



# MDPHnet



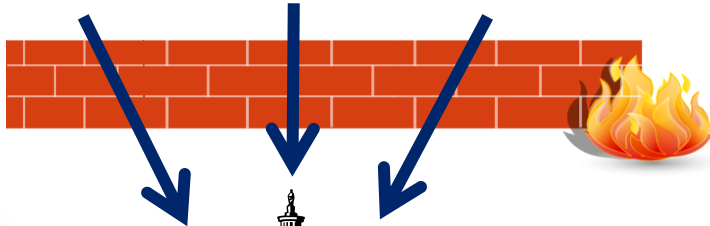
**Step 1.** Health department or other user creates a query through the MDPHnet system.



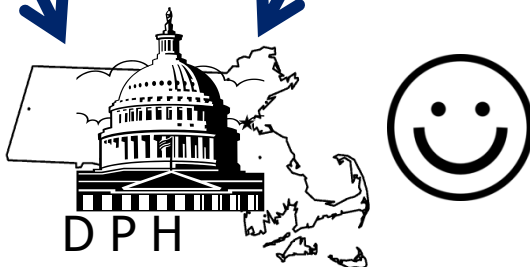
**Step 2.** MDPHnet distributes queries to practices participating in the network.



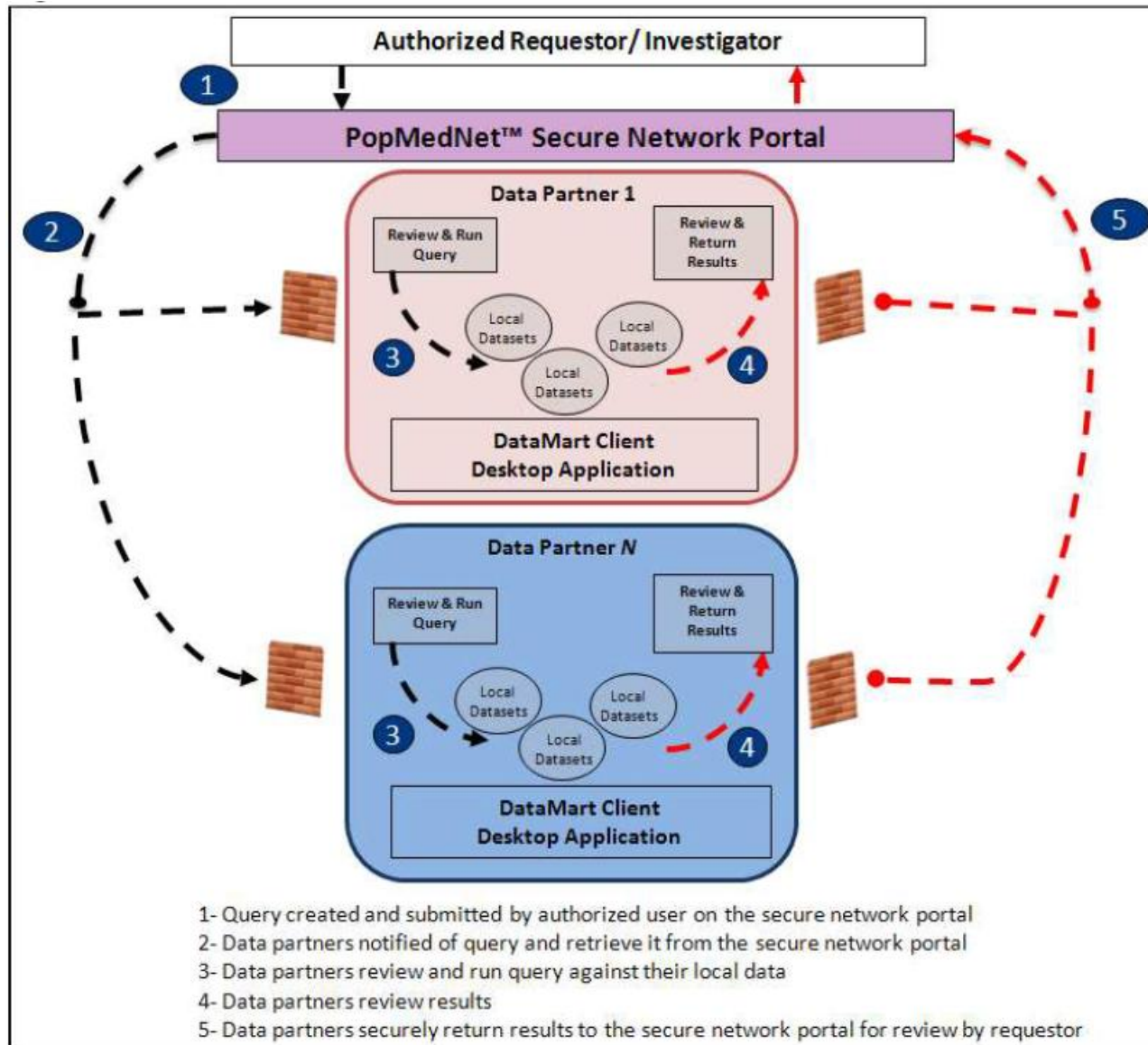
**Step 3.** Practices review queries behind a secure fire wall and authorize execution against their local ESPnet tables.



**Step 4.** MDPHnet integrates results and returns them to the health department.

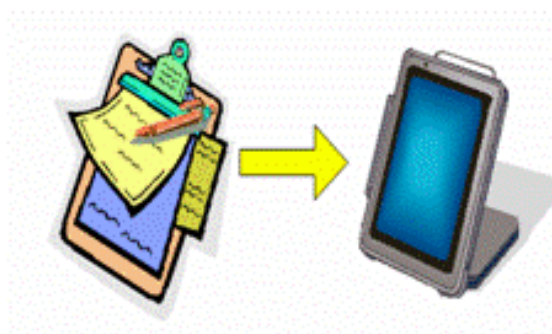


# Architecture of MDPHnet



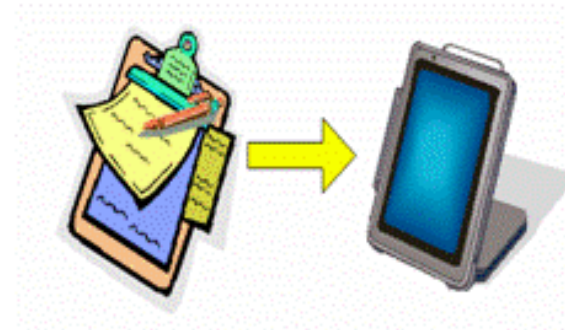
# Features of MDPHnet

- Privacy
  - Data stays with the providers
- All ICD-9 codes available
  - Many possibilities, new information
- Reportable diseases
  - ILI and Diabetes
  - Smoking and Asthma
- SQL Submission
  - Enables querying of entire data model



# Features of MDPHnet

- Scheduled Queries
- ZIP code stratification
- Cohorts



# Interoperability

- Atrius uses different EMR system from Mass League and Cambridge Health Alliance
- Built with the Query Health standard



# MDPHnet Usage

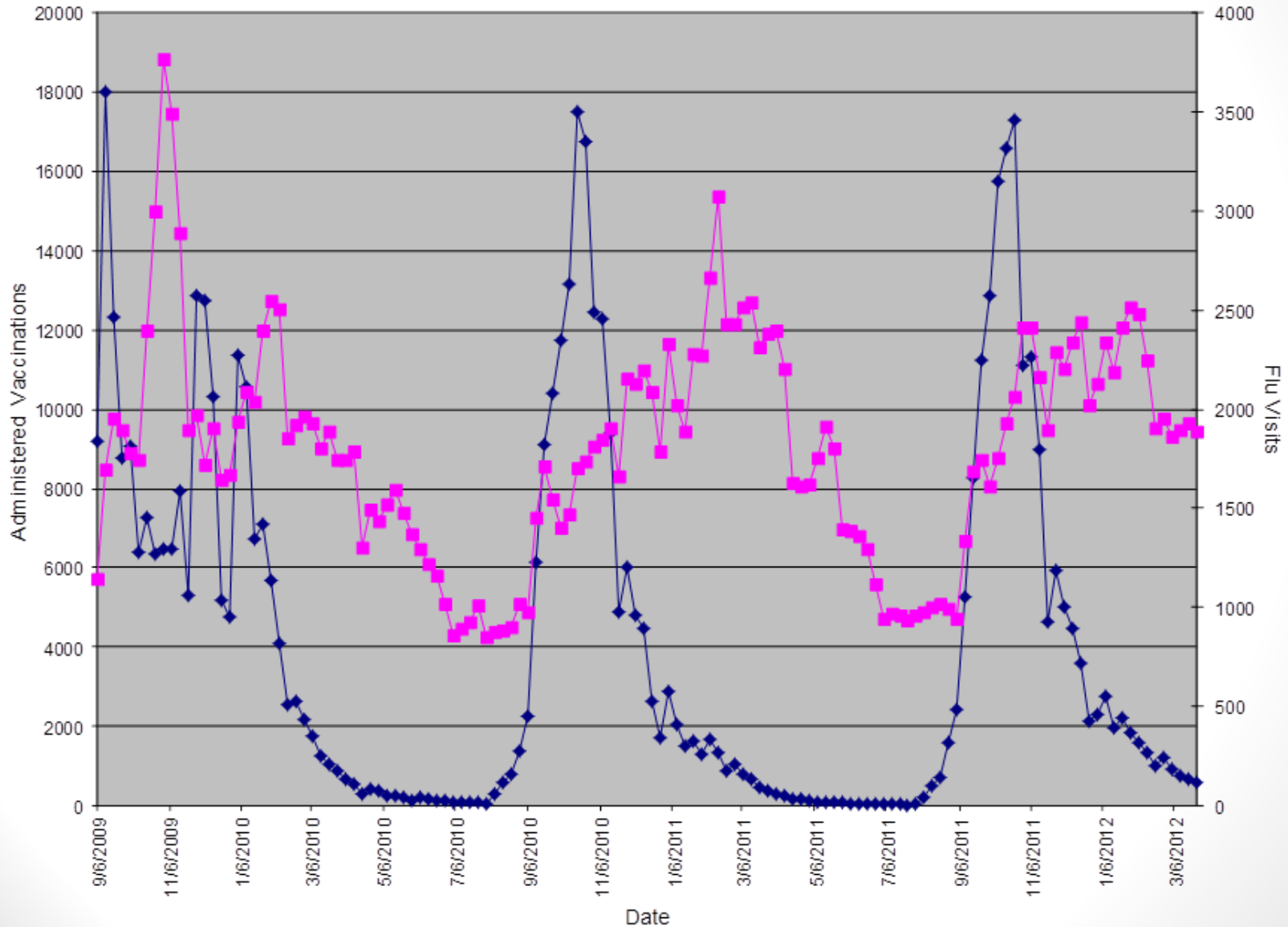
- 15% of epidemiologists at the department registered
- Monthly usergroups
- Proof-of-Concept queries
  - Diabetes
  - ILI





# MDPHnet Data

Flu vaccinations and visits based on data from MDPHnet



# MDPHnet vs. Existing Tools

**MDPHnet**

-----

**Diabetes**

**8.36%**

-----

**Tobacco Use**

**16.9%**

**BRFSS (2012)**

-----

**Diabetes**

**8.30%**

-----

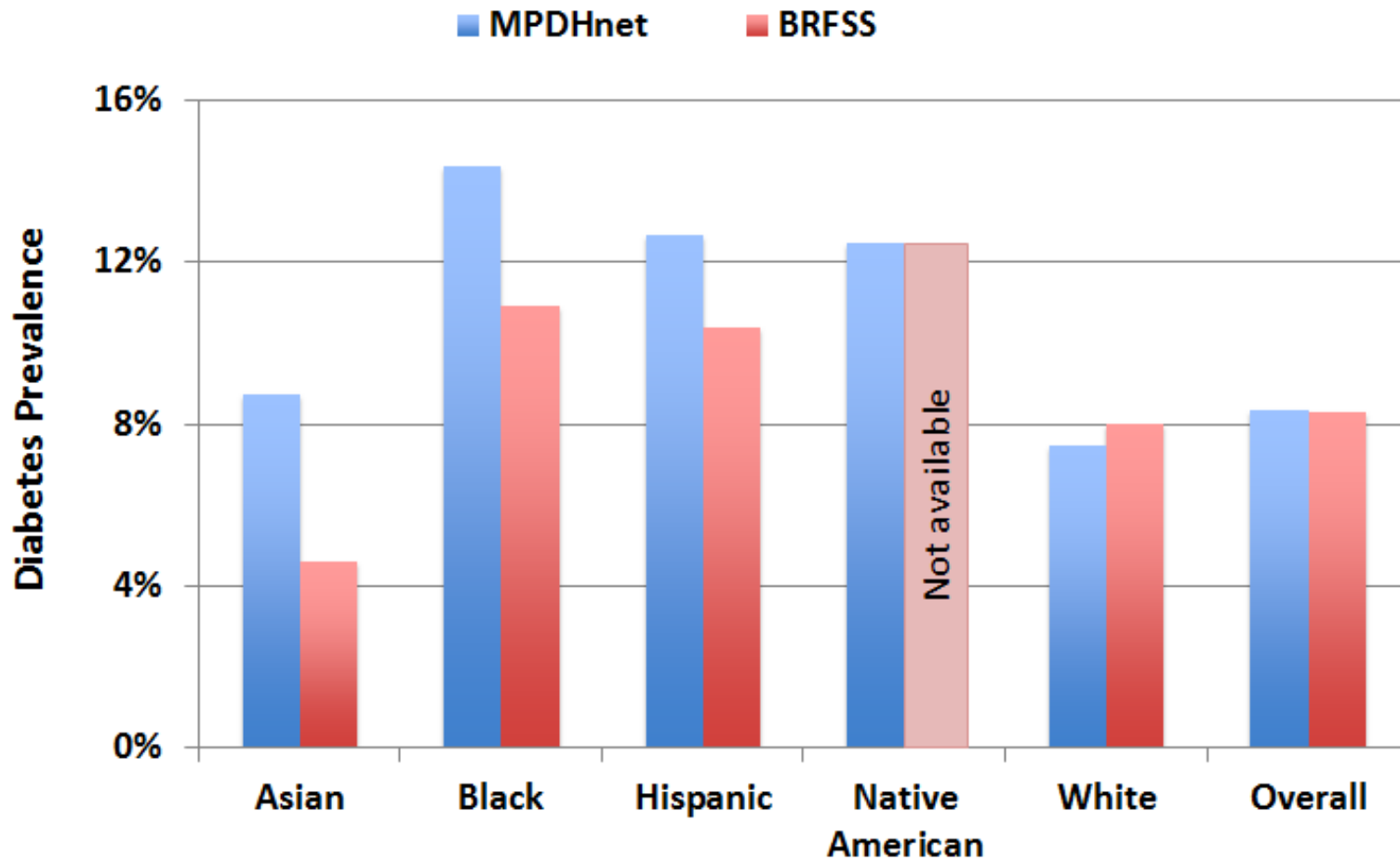
**Tobacco Use**

**16.4%**

# MDPHnet vs. Existing Tools

## Diabetes Prevalence by Race/Ethnicity

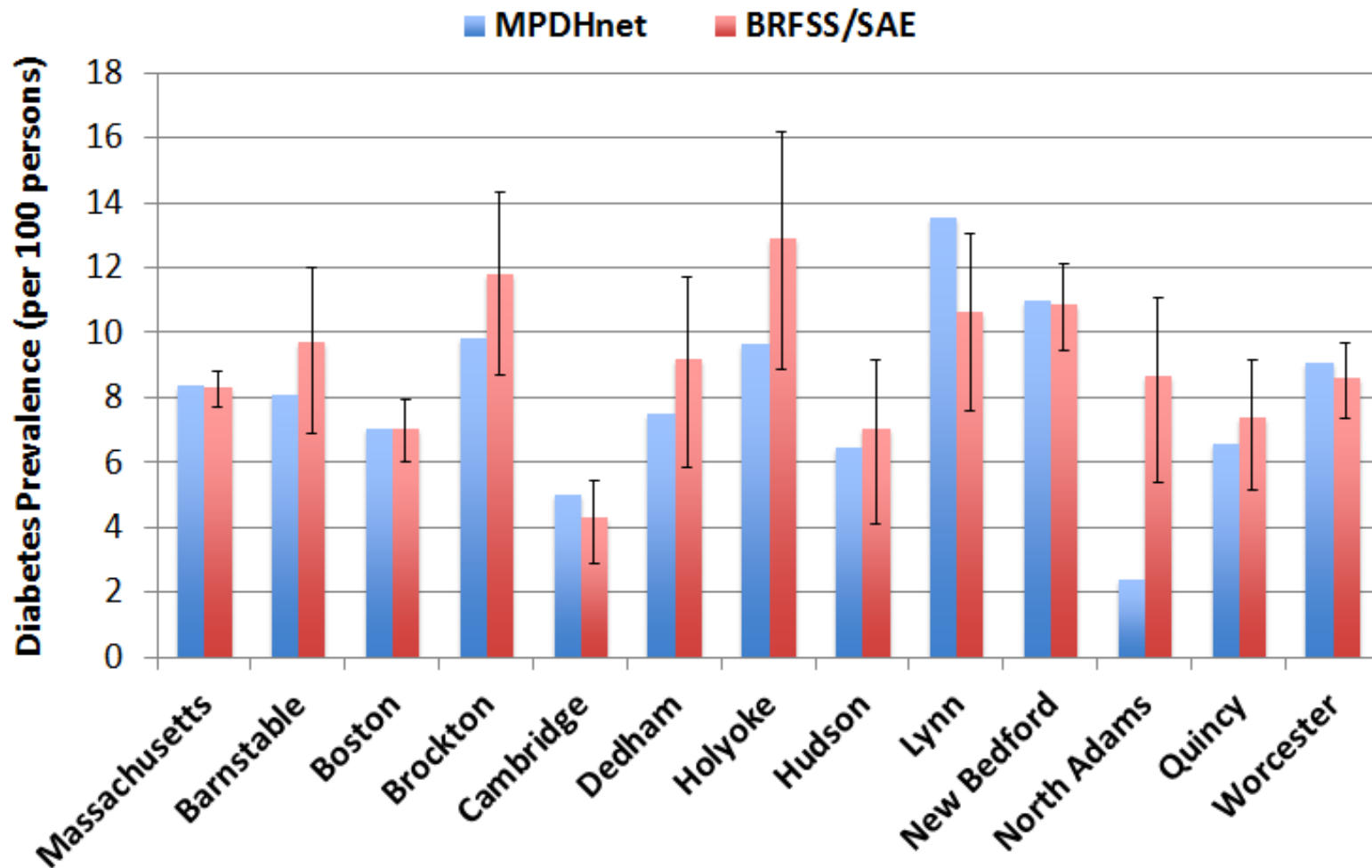
MDPHnet vs BRFSS



# MDPHnet vs. Existing Tools

## Diabetes Prevalence

MDPHnet vs BRFSS/SAEs



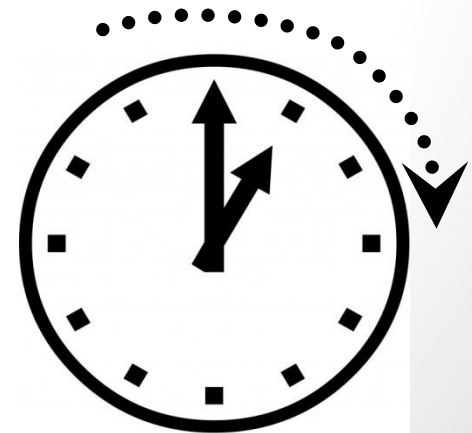
# Governance

- Representatives from each partner
- Monthly meetings
- Governance document
  - Response times
  - Suppression rules
- Funding and support structure



# Future

- Statistical extrapolation to state prevalence estimates
- Linkages
- Basis for cloud-based tools at DPH
- Multiple towns condition projection
- Algorithms to track mental health issues and opioid prescriptions
- Smoking enhancements



# More Information

- Systems like this have potential nationwide
- Other pilot projects are currently in various stages
- James Buszkiewicz  
Epidemiologist, Office of Statistics and Evaluation  
Massachusetts Department of Public Health  
[james.buszkiewicz@state.ma.us](mailto:james.buszkiewicz@state.ma.us)  
517-624-5428